



RM2060 WIRED LASER

5+1 BUTTONS MOUSE

USER'S MANUAL

Thank you for purchasing a quality Rosewill Product.
Please register your product at : www.rosewill.com/ for complete warranty information and future support for your product.

Important Ergonomic Information

Some experts believe that using any mouse or trackball may cause serious injury to hands, wrists, arms, neck, or back. If you feel pain, numbness, or weakness in these areas, see a qualified health professional.

TO REDUCE THE RISK OF INJURY, FOLLOW THESE PRECAUTIONS:

- ☞ Take frequent breaks, get up and walk around several times every hour.
- ☞ Vary your tasks throughout the day.
- ☞ Keep your shoulders relaxed with your elbows at your side. Position your keyboard and mouse so you do not have to reach.
- ☞ Adjust your chair and keyboard so your upper arms and wrists are straight.
- ☞ Avoid resting your wrists on sharp edges.

System Requirement

- ☞ Mouse compatible with standard Microsoft OS
- ☞ 3rd button and wheel function require Win98/ ME/ 2000/ XP
- ☞ 4th & 5th side buttons require Windows™, 2000 or XP, or driver installation
- ☞ Tilt wheel requires driver installation to be functioned.
- ☞ If your computer's operating system is Windows 98/ 98SE, please prepare the Windows98 or 98SE compact disk for system's request during the installation of mouse.
- ☞ Dpi switch button do not need driver
- ☞ 1st, 2nd and wheel are compatible with MAC

Before you begin

- ☞ Keep this installation guide for future reference! It contains Important Troubleshooting Information.
- ☞ Keep your old PS/2 or USB mouse as back-up devices.

Getting Started

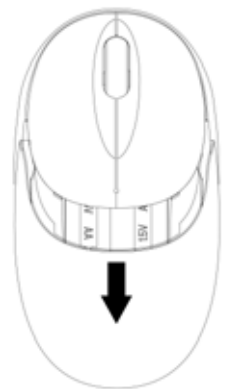
Congratulations on your purchase of LASER 5+1 button mouse. LASER mouse is the last technique of mouse industry. The most important feature for LASER mouse is that can work on most of shining surface and glass. In addition, its high resolution, 800/1600 hardware dpi, provide users a great experience to operate.

Package Contains

Your **RM2060** Mouse package includes the following:

1. **RM2060** LASER mouse
2. User's manual
3. CD-ROM Driver for Windows OS

Note : If any part is missing, please contact your dealer for a replacement immediately.



Hardware Installation Guide

Step 1. Plug the USB connector to Computer

1. USB is a PnP device; you can plug the device no matter the computer is on or off. Of course, you can remove USB device in the same way.
2. If the device is HD or pen drive or any device which can store files, stop the device than remove is the best way to protect the files.

Step 2. Waiting for new device detection

1. If your system is Windows ME/ 2000/ XP, windows will find a new device and install standard driver automatically.
2. The standard software only support standard functions and will not support special one of the mouse.

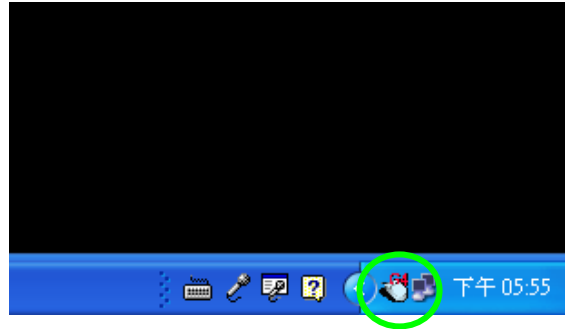
Software Installation & Operation Guide

To install the software, please follow the steps below to finish:

1. Insert the Auto-Run CD-ROM onto CD-ROM driver, the installation menu will be executed automatically. (If the auto-run does not function itself, double-click

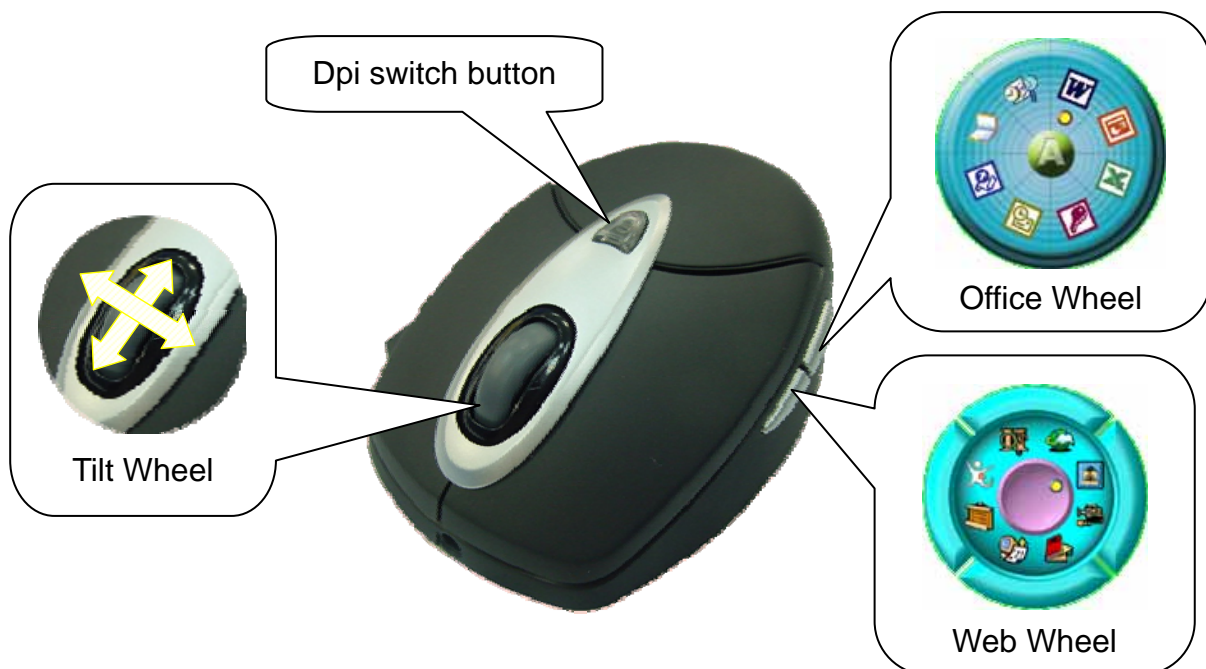
the “**setup**” icon in the CD files.)

2. The setup program will guide you to finish the installation step by step.
3. After you finish the installation, select "Restart" to reboot your system and activate multimedia hot keys and wheel scrolling functions.
4. After installed the driver, a symbol will show in the right hand side of working bar.



Programmable Office-Web Hot Keys

- When you install the included software driver the mouse hot keys will be enable with driver default.
- The Office-Wheel Function is attached on the mouse software as following.
Users can change the default function of wheel and extra hot-keys.
- Default setting for these hot keys is programmable as following as shown on the application by running the “Office-Web Wheel Center” as following:



GENERAL SPECIFICATIONS

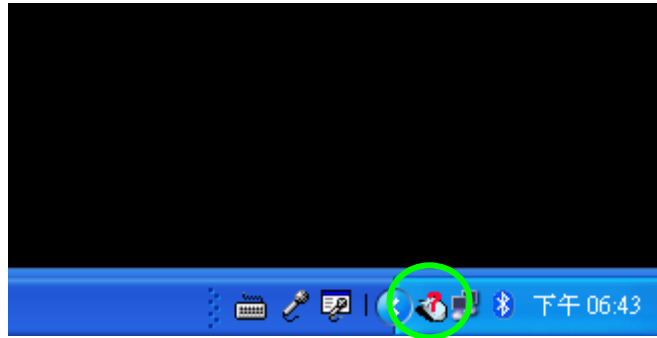
- High-tech VCSEL LASER mouse
- 1,600dpi hardware resolution
- 800/ 1,600 Dpi switch
- Power Rating: 5V DC / 30 mA
- 5+1 buttons design with tilt wheel
- Programmable hot-keys
- Office hot button
- Internet hot button
- Right hand Ergonomic design for comfortable grip.
- Operating Temperature Range:5 ~ 45

Troubleshooting

MOUSE NOT DETECTED

- Please note that USB port needs driver to active in Windows 95/ 98/ NT, or the USB mice will not working.
- Make sure the mouse cable is plugged into the correct port-USB. An USB mouse connects only to a USB port.
- Make sure your USB port has the proper configuration. Refer to your computer documentation for the correct port configuration.
- You may have other system devices (e.g. a modem card) that conflict with the mouse. Check the IRQ/address settings of these devices for conflicts, and change the setting as required. Refer to your computer documentation to make these changes. Determine whether the problem is mouse or system related, try the mouse on a second system or a different mouse on your current system.

Note: If mouse is not be detected and you installed driver already, a symbol will be showed in the right hand side of working bar. (as the photo as follow)



Electromagnetic Characteristics (EMC)



Tested to comply with FCC standards

For home or office use

This device complies with Part 15 of the FCC Rules. Operation is subject to the following two conditions: (1) This device may not cause harmful interference, and (2) this device must accept any interference received, including interference that may cause undesired operation.

- CE - Type acceptance: **EN55022/EN55024 I.T.E. Product**

CLASS 1 LASER PRODUCT
APPAREIL A LASER DE CLASSE 1
LASER KLASSE 1
LUOKAN 1 LASERLAITE
PRODUIT LASER
CATEGORIE 1

Thank you for purchasing a quality Rosewill Product.
Please register your product at : www.rosewill.com/ for complete warranty information and future support for your product.